



Introduction

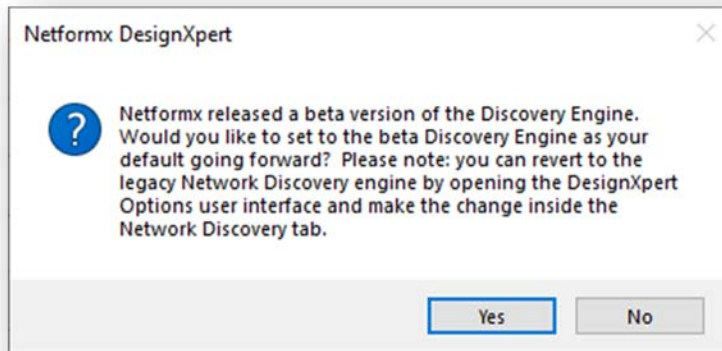
# Introduction to Netformx Discovery v20.x (Beta)

---

## Introducing Netformx Discovery v20.x

Netformx DesignXpert v18.9+ includes the beta release of the next generation Netformx Discovery experience (v20.x) including an updated User Interface (UI) and Engine. The details below will help you with getting started. A full [Netformx Discovery v20.x Beta Step-by-Step Guide](#) is available with more detailed information.

The next time you start a new Discovery Project and after you name and save the Project, DesignXpert will ask if you want to set the new v20.x version as your default experience or if you prefer to continue using legacy Discovery.



Selecting “Yes” will set your Discovery default to the new UI & engine.

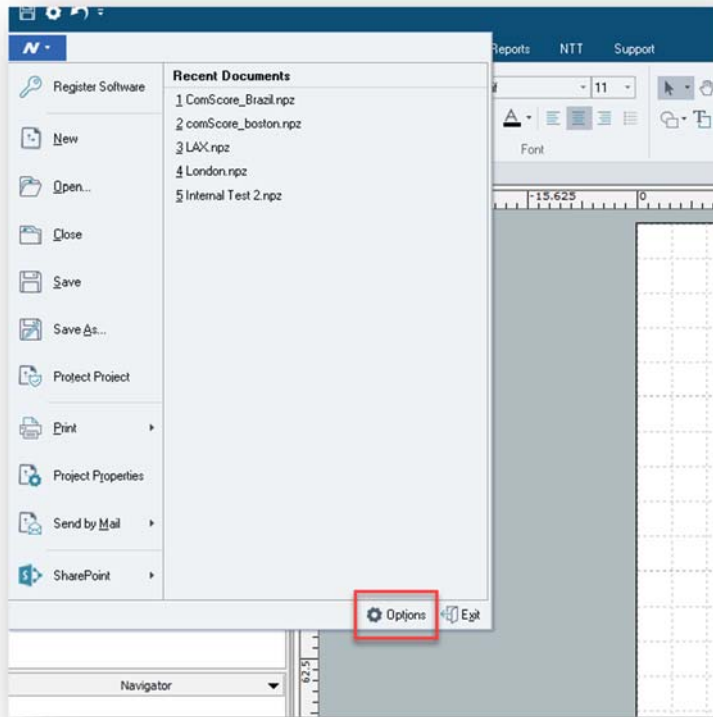
## Caution: Things to Consider before Migrating

- **Limited Backward/Forward Compatibility**
  - **v20.x Discovery details cannot be accessed inside the legacy UI:** Discovery v20.x introduces a new file structure (JSON) and new file format (Network Discovery File) and new file extension (.NDF), which is incompatible with the old legacy version.
  - **Previous Discovery details cannot be accessed in the new UI:** Similarly, the legacy Discovery uses an older file structure (XML), older file format (Network Discovery Record) and older file extension (.NDR), which is incompatible with the new version.
- **Access to Previous Environmental Settings**
  - When using Discovery v20.x, DesignXpert allows you to import old .NDR output into your Project. However, you will not be able to import your customer environmental settings (SNMP strings, Telnet /SSH settings, etc.) defined and saved via XML.
  - To fix this you will need to define them again inside the new UI.

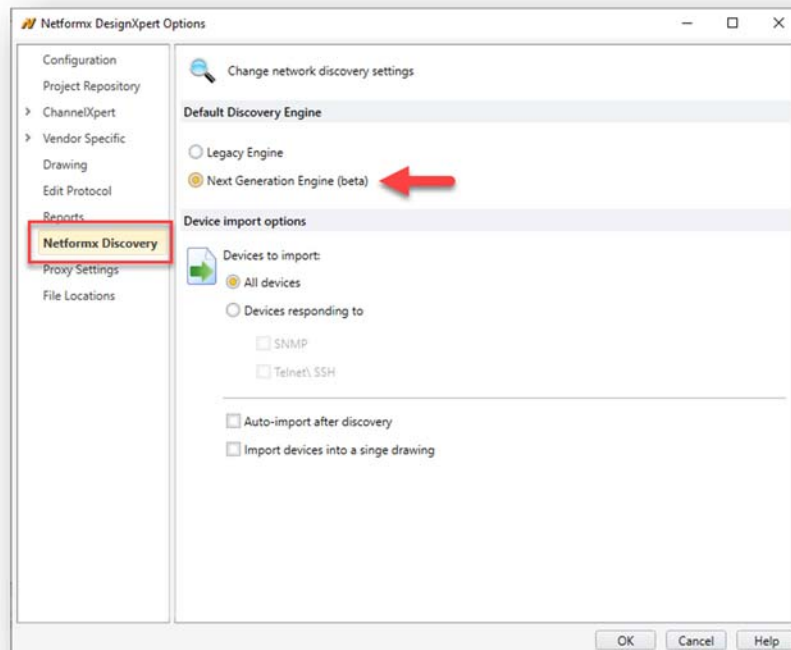
## Changing your Discovery Experience

To change your default Discovery experience choice, please do the following.

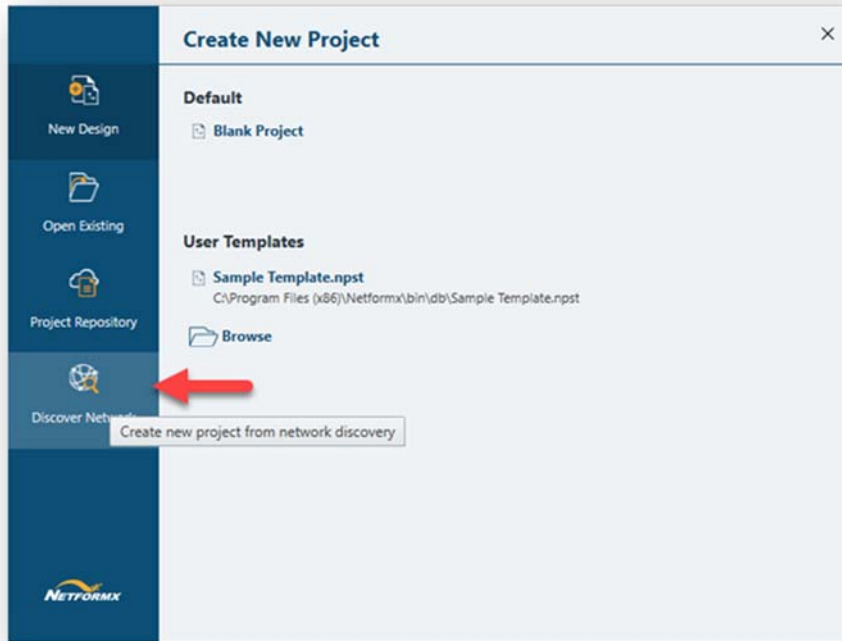
**Step 1:** Open DesignXpert and click on the blue N in the upper left-hand corner. Access Options as shown in the image below.



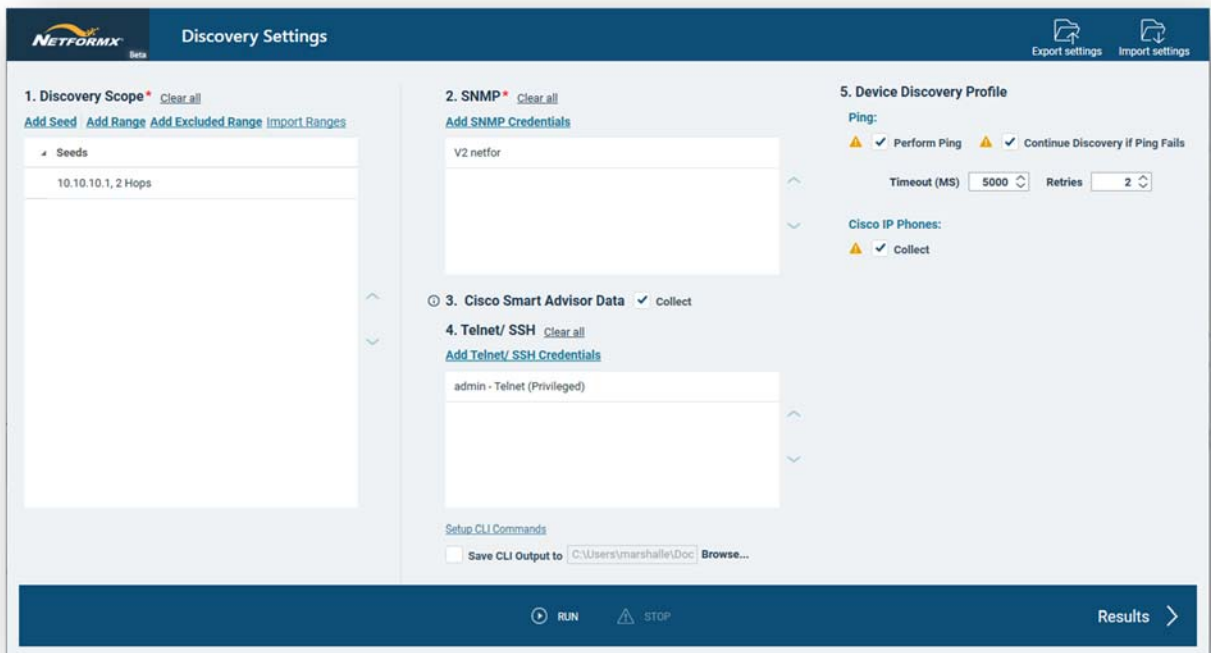
**Step 2:** Click on the Netformx Discovery tab and make your selection. The image shows the user selecting the Next Generation Engine (beta) radio button. Click OK to complete your selection choice.



**Step 3:** Start a new Discovery Project



**Step 4:** After naming and saving the new Project name, the Discovery UI opens



**Step 5:** Clear the Discovery & SNMP scopes (these are default examples), and program them for your customer environment. See the Step-by-Step guide for further details.

You can revert to the legacy engine at any time to access previous Discovery projects, or to start a new project.

## Share your Experience

We want your feedback during the beta release. Please help us and improve your customer experience by performing a test discovery or actual discovery. Share your experience with the Customer Success team at [support@netformx.com](mailto:support@netformx.com) and provide screenshots that may better support your experience.

Let us know:

- What do you like better?
- What has room for improvement or needs fixing?
- Did you see speed improvements?
- Is there anything else you would like to share?

Thank you for your support of Netformx!