



Netformx Collection Engine Guide

March 2020

Notice

The information contained in this publication is proprietary and may not be reproduced, in whole or in part, without the written consent of Netformx, Ltd.® and its subsidiaries.

The information in this document is subject to change without notice. Additional information may be inserted in future editions. The user is asked to excuse any omissions or errors in the present edition. No liability will be assumed by Netformx, Ltd.® and its subsidiaries for any changes, omissions, or errors in this manual or for the consequences of any actions that occur while using this manual or the product to which it relates. Some functionality is not available in all DesignXpert editions and is subject to a special subscription agreement with Netformx®. Please see documentation for details.

© 1998-2020 by Netformx, Ltd.® All Rights Reserved. vMarch2020

Netformx Discovery™, Netformx DesignXpert®, LinkXpert™, SmartLayers, Netformx HUB, KnowledgeXpert, SalesXpert and are trademarks of Netformx, Ltd. Visio is a trademark of Microsoft Corporation. Cisco, Cisco Systems, and the Cisco logo are trademarks of Cisco Systems, Inc. Windows and Microsoft Windows are trademarks of Microsoft, Inc. All other trademarks are used for identification and are the property of their respective owners.

Document Version

Date	Document Version	Created by	Changes
October 2016	1.0	Simonwrigley@Netformx.com	Initial release
March 2020	1.1	Marshall.eisenberg@Netformx.com	Edits and Updates

Table of Contents

Introduction to the Netformx Collection Engine	4
Target System Prerequisites.....	4
Recommended Workflow	5
Installing and Launching the Netformx Collection Engine	6
Importing the Results into DesignXpert.....	8
Analyzing the Results	9

Introduction to the Netformx Collection Engine

Previously there were two options in which to perform an assessment of the client's network:

- **Netformx Discovery** – Network Assessment & reporting tool
- **Netformx DesignXpert** – Comprehensive network design and assessment tool

Both these options listed above require a subscription of Netformx DesignXpert and Discovery and are dependent on the Netformx Updater.

Netformx now introduces a third option the “Netformx Collection Engine” a self-contained packaged version of the existing discovery engine, which provides greater flexibility and portability. It's designed to be installed on an end-user's Window's based machine located at the site where the discovery operation takes place, albeit free of a licensed version of DesignXpert or Netformx Discovery or dependency on the Updater on that specific system. The Netformx Collection Engine is designed to simplify the discovery process providing you a clear concise assessment of the target network in a short space of time. However, collecting and processing the results of a discovery action from the Collection Engine can happen only with a current subscription to DesignXpert.

The Collection Engine can be easily installed either remotely via email on the host machine at the target location where the discovery process will be performed or can be transferred via a USB stick and then transported and downloaded.

Target System Prerequisites

In order to successfully assess the target system machine, the target machine must meet the following prerequisites:

- Access Runtime 2007/2010/2013
- Microsoft Visual C++ 2010 x86 Redistributable
- .NET Framework > Version 4.0

Notes:

- Access 2013 Runtime include the C++ Redistributable
- The Collection Engine installation process does not install missing applications

Recommended Workflow

This section, outlines the recommended workflow for installing the Netformx Collection Engine, running a discovery and then importing the results in to DesignXpert, which may then be analyzed.

1. Netformx DesignXpert user logs in to the Netformx HUB using their credentials.
2. From the Netformx HUB, navigate to the Discovery section to access the Collection Engine (CE) installer download location.
3. Transfer the Installation file to the Host user's machine where the Discovery will take place and run the installation file in order to download the Netformx Collection Engine.
4. Double-click on the Collection Engine icon and create a new project to contain the Discovery results.
5. Configure Network settings.
6. Run Discovery inside the target environment.
7. Transfer the discovery results (.ndr file) back to system hosting DesignXpert.
8. Open DesignXpert, access **Options** → **Project Repository**, and ensure you have added your Netformx Hub user credentials here.
9. Import the project into DesignXpert.
10. Generate reports and analyze the findings.

Installing and Launching the Netformx Collection Engine

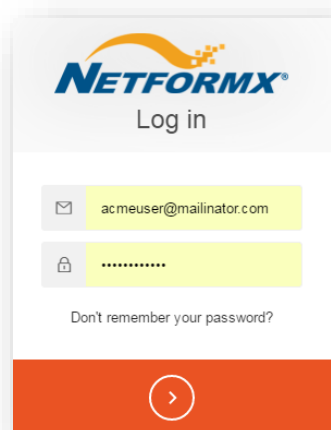
The Netformx Collection Engine is installed on a Windows-based host machine located on the targets network where the Discovery will take place. The lightweight Installation file (10Mb) can be emailed to the target location or can be saved on a USB stick and then downloaded to the host machine.

The following provides the required steps to install and launch the Netformx Collection Engine perform a discovery process of the target network.

The first step is to logon to the Netformx HUB and download the Installation file. Once you have download the installation file, you can either transfer the installation file via email to the host machine at the target location or you can save it to a USB stick and transport it physically to the intended host machine.

To log on to the HUB and download the Installation file to your computer:

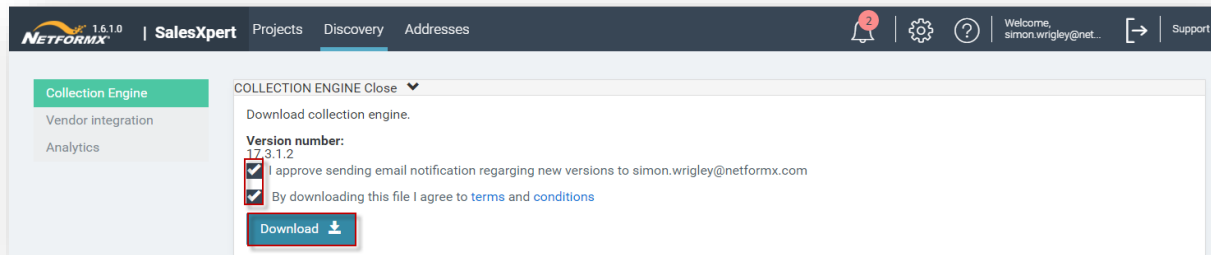
1. Logon to the Netformx HUB using your HUB credentials.



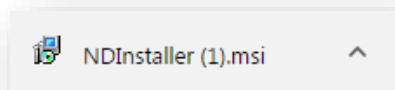
2. From the *HUB Landing* page, select **Discovery**; The *Discovery* page opens.



3. In the *Discovery* page, enable the options in the *Collection Engine* pane and click **Download**.

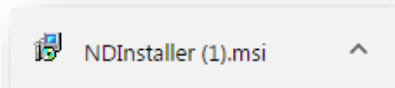


The NDInstaller.msi file downloads; Upon completion the NDInstaller (1).msi file icon appears in the bottom left hand side of your screen. You can now copy and send the installation file via email or copy the file to a USB stick and transport it physically to the intended host machine where the discovery will take place.

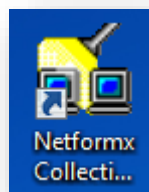


To run the Installation file and launch a Discovery:

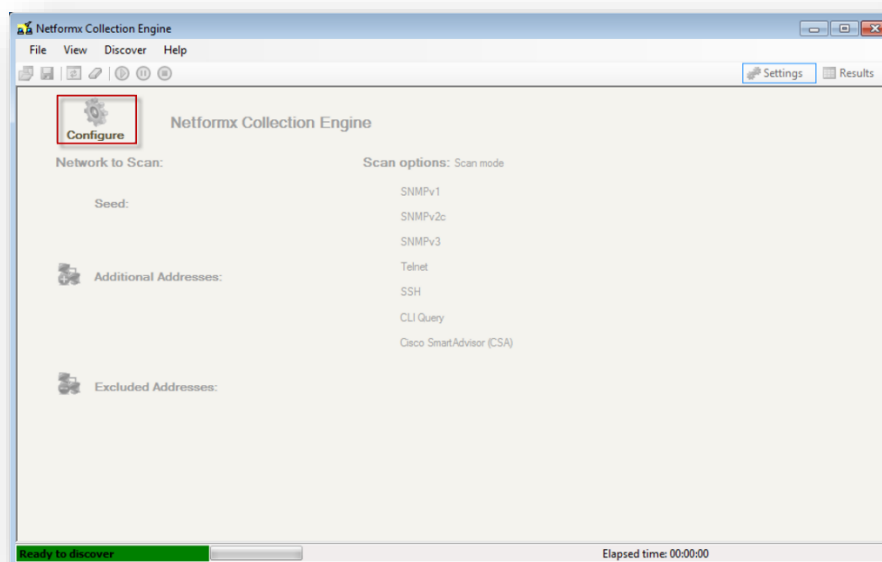
1. On the host machine, double-click on the **NDInstaller.msi** file icon and select to run the file.



Upon completion the *Netformx Collection Engine* icon appears on your desktop.



2. Double-click on the **Netformx Collection** icon: The *Netformx Collection Engine* window is displayed.



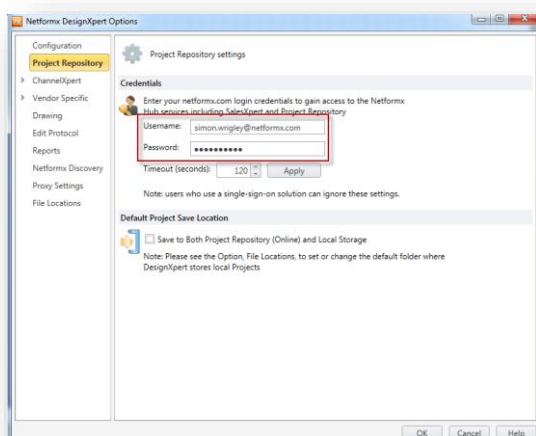
3. In the *Netformx Collection Engine* window, select **File > New Project** and then in the window that appears enter a name for your project and click **Save**.
4. Select **File > Load Settings**; The *Open* window appears.
5. Select your project that you defined in the previous step and click **Open**; Your project is loaded into the *Netformx Collection Engine* and the project title appears above the window.
6. In the *Netformx Collection Engine* window, select **Configure**; The *Netformx Collection Engine* configuration window appears.
7. Please refer to the [Netformx Discovery Step by Step Guide](#) for a complete description on configuring and running the Network Discovery.
8. Once the discovery is complete a window appears listing all the discovered devices in the network as defined in the Configuration settings. When you initiate a Discovery the application automatically creates a .ndr file which contains the findings of the Discovery. For further information, refer to **“Importing the Results in to DesignXpert”** section below.

Note: For further information, view the following video which provides you with an insight and detailed information on how to configure and launch a discovery by [“clicking here”](#).

Importing the Results into DesignXpert

Before you can import the results of the scan into Netformx DesignXpert you must enter your Netformx.com login credentials in the *Project Repository* window.

Note: If you do not have an active Netformx HUB account, please contact your Netformx Account Manager.

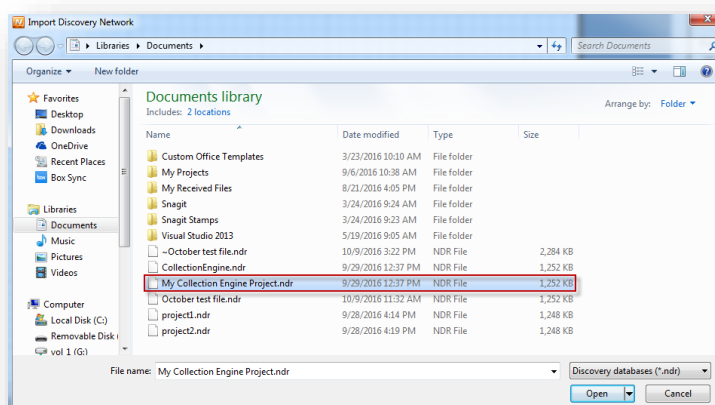


👉 To enter your HUB user credentials:

1. From the *Netformx DesignXpert Options* window, select **Project Repository**.
2. Enter your Netformx.com login credentials and then click **Apply** > **OK**.

👉 To import the Discovery results into DesignXpert:

1. From the *Design* menu, select **Network Discovery** > **Discovery Tool** > **Import Discovered Network**; The *Import Discovery Network* window is displayed.



2. Select the relevant Discovery output flagged with the .ndr extension as shown in the example above and then click **Open**; The results are imported into DesignXpert and in addition the project appears in the Drawing Browser as well as in the main Drawing area. Note that during the import process, a popup window is displayed giving you the opportunity to view the Discovery findings before importing the project into DesignXpert.

Analyzing the Results

Once you have imported the Discovery project into DesignXpert you can generate various reports to assist you in analyzing the Discovery results.

Please refer to the [Netformx Discovery Step by Step Guide](#) for a complete description on configuring and running the Network Discovery.